

Avondale University

ResearchOnline@Avondale

---

Nursing and Health Papers and Journal Articles

School of Nursing and Health

---

4-1-2019

## Reducing Urinary Catheter Use Using an Electronic Reminder System in Hospitalized Patients: A Randomized Stepped-Wedge Trial

Brett G. Mitchell

Avondale College of Higher Education, [brett.mitchell@avondale.edu.au](mailto:brett.mitchell@avondale.edu.au)

Maria T. Northcote

Avondale College of Higher Education, [maria.northcote@avondale.edu.au](mailto:maria.northcote@avondale.edu.au)

Allen C. Cheng

Monash University

Oyebola Fasugba

Australian Catholic University

Philip Russo

Avondale College of Higher Education, [philrusso64@gmail.com](mailto:philrusso64@gmail.com)

See next page for additional authors

Follow this and additional works at: [https://research.avondale.edu.au/nh\\_papers](https://research.avondale.edu.au/nh_papers)



Part of the [Nursing Commons](#)

---

### Recommended Citation

Mitchell, B. G., Northcote, M., Cheng, A. C., Fasugba, O., Russo, P. L., & Rosebrock, H. (2019). Reducing urinary catheter use using an electronic reminder system in hospitalized patients: A randomized stepped-wedge trial. *Infection Control and Hospital Epidemiology*, 40(4), 427-431. doi:10.1017/ice.2019.31

This Article is brought to you for free and open access by the School of Nursing and Health at ResearchOnline@Avondale. It has been accepted for inclusion in Nursing and Health Papers and Journal Articles by an authorized administrator of ResearchOnline@Avondale. For more information, please contact [alicia.starr@avondale.edu.au](mailto:alicia.starr@avondale.edu.au).


---

**Authors**

Brett G. Mitchell, Maria T. Northcote, Allen C. Cheng, Oyebola Fasugba, Philip Russo, and Hannah Rosebrock

## Original Article

# Reducing urinary catheter use using an electronic reminder system in hospitalized patients: A randomized stepped-wedge trial

Brett G. Mitchell PhD<sup>1,2</sup> , Maria Northcote PhD<sup>3</sup>, Allen C. Cheng PhD<sup>4,5</sup>, Oyebola Fasugba PhD<sup>6,7</sup>, Philip L. Russo PhD<sup>7,8,9</sup> and Hannah Rosebrock MPysch<sup>7</sup>

<sup>1</sup>Faculty of Arts, Nursing, and Theology, Avondale College of Higher Education, Wahroonga, New South Wales, Australia, <sup>2</sup>School of Nursing and Midwifery, University of Newcastle, Newcastle, New South Wales, Australia, <sup>3</sup>Faculty of Education, Business and Science, Avondale College of Higher Education, Cooranbong, New South Wales, Australia, <sup>4</sup>Infection Prevention and Healthcare Epidemiology Unit, Alfred Health, Melbourne, Victoria, Australia, <sup>5</sup>School of Public Health and Preventive Medicine, Monash University, Melbourne, Victoria, Australia, <sup>6</sup>Nursing Research Institute, Australian Catholic University and St Vincent's Health Australia, Sydney, Australian Capital Territory, Australia, <sup>7</sup>Lifestyle Research Centre, Avondale College of Higher Education, Cooranbong, New South Wales, Australia, <sup>8</sup>Centre for Nursing Research, Cabrini Institute, Malvern, Victoria, Australia and <sup>9</sup>Faculty of Medicine, Nursing, and Health Sciences, Monash University, Clayton, Victoria, Australia

## Abstract

**Objective:** To determine the effectiveness and ease of use of an electronic reminder device in reducing urinary catheterization duration.

**Design:** A randomized controlled trial with a cross-sectional anonymous online survey and focus group.

**Setting:** Ten wards in an Australian hospital.

**Participants:** All hospitalized patients with a urinary catheter.

**Intervention:** An electronic reminder system, the CATH TAG, applied to urinary catheter bags to prompt removal of urinary catheters.

**Outcomes:** Catheterization duration and perceptions of nurses about the ease of use.

**Methods:** A Cox proportional hazards model was used to assess the rate of removal of catheters. A phenomenological approach underpinned data collection and analysis methods associated with the focus group.

**Results:** In total, 1,167 patients with a urinary catheter were included. The mean durations in control and intervention phases were 5.51 days (95% confidence interval [CI], 4.9–6.2) and 5.08 days (95% CI, 4.6–5.6), respectively. For patients who had a CATH TAG applied, the hazard ratio (HR) was 1.02 (95% CI, 0.91–1.14;  $P = .75$ ). A subgroup analysis excluded patients in an intensive care unit (ICU), and the use of the CATH TAG was associated with a 23% decrease in the mean, from 5.00 days (95% CI, 4.44–5.56) to 3.84 days (95% CI, 3.47–4.21). Overall, 82 nurses completed a survey and 5 nurses participated in a focus group. Responses regarding the device were largely positive, and benefits for patient care were identified.

**Conclusion:** The CATH TAG did not reduce the duration of catheterization, but potential benefits in patients outside the ICU were identified. Electronic reminders may be useful to aid prompt removal of urinary catheters in the non-ICU hospital setting.

(Received 10 October 2018; accepted 24 January 2019)

The main risk factor for catheter-associated urinary tract infections (CAUTIs) appears to be prolonged catheterization.<sup>1</sup> Previous research has shown promising results using reminder interventions to reduce urinary catheter use.<sup>1,2</sup> However, we have been unable to identify any studies evaluating electronic reminders at the point of care for urinary catheters or studies that have included randomization in their design. A reminder intervention is a mechanism that prompts the nurse or physician to review the ongoing need for catheterization. Catheter reminder interventions

evaluated in previous research included verbal or written reminders, a sticker on the catheter bag or patient's chart, computer-generated reminders, or stop orders.<sup>1,2</sup> The 2 main objectives of the our study were (1) to examine the efficacy of an electronic reminder system, the CATH TAG, in reducing the duration of catheterization in hospitalized patients and (2) to explore the effects of the CATH TAG on nurses' ability to deliver patient care.

## Methods

### Study design and setting

A stepped-wedge, randomized, controlled design was performed in 10 wards of a large, principal referral, Australian hospital over a

**Author for correspondence:** Brett G. Mitchell, Email: [brett.mitchell@avondale.edu.au](mailto:brett.mitchell@avondale.edu.au)

**Cite this article:** Mitchell BG, et al. (2019). Reducing urinary catheter use using an electronic reminder system in hospitalized patients: A randomized stepped-wedge trial. *Infection Control & Hospital Epidemiology*, 40: 427–431, <https://doi.org/10.1017/ice.2019.31>

24-week period (Supplementary Fig. S1 online). The wards included medical and surgical wards, in addition to the intensive care unit (ICU). The study commenced in November 2017 and concluded in May 2018. A cross-sectional anonymous online survey was conducted at the end of the study period, in addition to a focus-group interview. The study was registered with the Australian and New Zealand Clinical Trial Registry (no. ACTRN12617001191381), and a study protocol has been published.<sup>3</sup>

### Participants and eligibility

All hospitalized patients in eligible wards of the hospital who had an indwelling urinary catheter as part of their usual clinical care were included in the study. Patients <2 years old were excluded. The participants in the online survey and focus group were nursing staff; this group was chosen because they were directly involved in the intervention and urinary catheter care.

### Ethics

Ethics approval was obtained from the human research ethics committees of Avondale College of Higher Education (2017: 15) and Townville Hospital and Health Service (no. HREC17QTHS19). A waiver of individual patient consent was obtained for this study.

### Randomization and blinding

Using computer-generated randomization, eligible wards in the hospital were randomly assigned to cross over to the intervention every 4 weeks over the trial duration. Randomization was performed by a person not involved in the study. The allocation was performed immediately prior to the commencement of the study. Wards were not blinded because it was not feasible to blind the staff to the intervention.

### Intervention

The intervention was the use of the CATH TAG. The CATH TAG is an electronic device in the form of a sticker that attaches to the catheter bag with adhesive (Supplementary Fig. S2 online). It is lightweight and has a nonintrusive green light that flashes intermittently for a period of 24 hours upon activation. After 24 hours, the green flashing light changes to red, flashing with increased rapidity and visibility. The red flashing light is an indication that the nurse should reassess the need for a urinary catheter and should remove it if it is no longer required. There is no option for nurses to manipulate the flashing light or amend the flashing cycle.

A variety of methods were used to raise awareness about the how to use the CATH TAG, including wall posters, flyers, information leaflets, and engagement with the nursing managers at the ward level. These focused on the use of the CATH TAG and study, not catheterization practices or duration. Further details regarding the intervention, including fidelity, are detailed in supplementary material.

### Outcomes

We considered two primary outcomes for the study: (1) urinary catheter duration and (2) the perceptions of nurses about the ease of use of the CATH TAG. In our initial protocol, the primary outcomes were the urinary catheter device utilization ratio and the perceptions of nurses. Prior to analysis, it became evident that the research team was not able to obtain patient-day data that aligned precisely with the date when a ward switched from the control to the

**Table 1.** Characteristics of Study Participants with an Indwelling Urinary Catheter

Variable	Control Phase, No. (%)	Intervention Phase, No. (%)	P Value
Participants	595	572	...
<b>Age</b>			<.01
Median	66	63	<.01
IQR	54, 75	49, 73	
<b>Sex</b>			
Female	291 (48.9)	235 (41.1)	.05
Male	304 (51.1)	337 (58.9)	.03
<b>Infectious diagnosis</b>			
Yes	391 (65.7)	421 (73.6)	.05

intervention. Therefore, the team decided to amend the primary outcome to urinary catheter duration, which is consistent with the approach taken in other studies.<sup>2</sup> The change was approved by the clinical trial registry prior to analysis being undertaken.

Secondary outcomes included the number of cases of catheter-associated asymptomatic bacteriuria per 100 catheter days, perceptions of nurses about effectiveness of the CATH TAG, changes in ownership or interest by patients in catheter management, and barriers to the CATH TAG working successfully in various types of patients.

### Perceptions of nurses

A phenomenological approach, seeking to understand the participants' lived experience of a phenomenon, was the theoretical underpinning for the data collection and analysis methods used in association with the focus group. The purpose of the focus group was to gain an in-depth understanding of a sample of participants. Focus-group participants received a gift card to compensate them for their time because attendance occurred on their own time.

### Statistical analysis

#### Catheter duration

The analysis employed an intention-to-treat strategy and involved the inclusion of all patients in the randomized clusters in the analysis, regardless of any deviations from the study protocol. We used a Cox proportional hazards model to assess the rate of removal of catheters, with the duration of catheterization censored at the time of patient transfer and the intervention considered as a time-varying covariate. That is, the effect of the intervention was assumed to relate to the ward on which the patient was cared for. In this model, the hazard ratio (HR) represents the hazard of catheter removal, such that HR >1 represents earlier removal. In a subanalysis, we repeated the Cox proportional hazards regression, excluding patients in the intensive care unit (ICU). There is a strong rationale for subanalysis based on differing results between ICU and non-ICU settings for CAUTI interventions.<sup>4</sup> In a sensitivity analysis, we repeated the model, adjusting for sex, age and the presence of a primary infective diagnosis. We assessed the risk of bacteriuria using a conditional logistic regression, with intervention as the only independent variable, adjusted for clustering at the patient level.

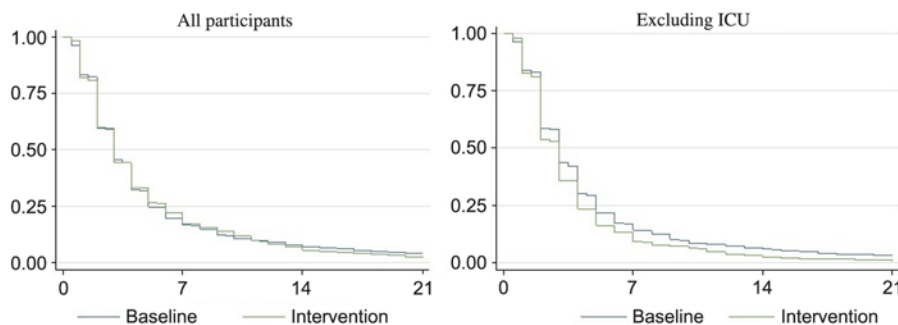
#### Survey and focus group

Mean responses to Likert questions were calculated. An independent *t* test was used to compare means. For reliability testing, we

**Table 2.** Likert Scale Responses of Nurses to Survey Questions Regarding the CATH TAG

Study Outcome	Question	All Included Wards/Units			ICU			Non ICU			P Value
		N	Mean	SD	N	Mean	SD	N	Mean	SD	
Primary: Use of device	It was easy for me to use the CATH TAG.	82	4.38	0.780	19	4.53	0.697	63	4.33	0.803	.348
Primary: Use of device	I received sufficient training to use the CATH TAG.	82	3.55	1.209	19	3.79	1.182	63	3.48	1.216	.333
Primary: Use of device	I integrated the CATH TAG in my daily routine.	82	3.50	1.136	19	2.84	1.302	63	3.70	1.010	.003
Secondary: Effectiveness	The CATH TAG was helpful in my daily routine.	82	3.18	1.278	19	2.26	1.368	63	3.46	1.119	<.001
Secondary: Effectiveness	The CATH TAG was helpful in reminding me to check the need for ongoing catheterisation.	82	3.41	1.396	19	2.26	1.447	63	3.76	1.187	<.001
Secondary: Effectiveness	I trust the CATH TAG to remind me in time to check on catheters.	82	3.41	1.324	19	2.37	1.300	63	3.73	1.167	<.001
Secondary: Effectiveness	I think the CATH TAG decreased my workload.	82	2.78	1.166	19	2.11	1.197	63	2.98	1.085	.003
Secondary: Effectiveness	I would like to use the CATH TAG in future.	82	3.33	1.176	19	2.53	1.264	63	3.57	1.043	<.001
Secondary: Ownership	Patients asked me about the CATH TAG	82	2.01	1.242	19	1.11	0.315	63	2.29	1.288	<.001
Secondary: Ownership	Patients notified me about the CATH TAG changing from green to red or from red to green.	82	1.78	1.217	19	1.05	0.229	63	2.00	1.308	.002

Note. SD, standard deviation; ICU, intensive care unit.



**Fig. 1.** Proportion of patients with a urinary catheter during the baseline (no CATH TAG) and intervention (CATH TAG) phases of the study. X axis: days since insertion; Y axis: proportion of patients with catheter. Legend: Blue line indicates the proportion of patients with a catheter during the control (baseline phase). Green line indicates the proportion of patients with a catheter during the control (baseline phase). All participants refers to the data from all wards participating in the study. Excluding ICU refers to all wards in the study, excluding the intensive care unit.

calculated Cronbach's  $\alpha$ . The overall approach used to analyze the qualitative data from the focus groups can best be described as a 'thematic coding approach'.<sup>5</sup> However, in this study, we also grouped data into a number of predetermined topics, established by the study's research questions and objectives, before they were inductively coded using the thematic coding approach in NVivo software (QSR International, Melbourne, Australia).

#### Sample size and power estimation

Our sample size calculation was based on being able to detect a difference of 20% relative risk (10% absolute risk) reduction in catheterization, using a stepped-wedge design.<sup>3</sup>

## Results

### Participants

#### Hospital participants

During the study period, 1,167 patients had a urinary catheter on the study wards and were included in our study (Table 1).

The median age for the study group was 65 years (range, 16–103 years), and 45% of participants were female.

#### Nurse participants

In total, 82 nurses completed the online survey, representing an estimated 27% response rate. The completion rate was 100%; that is, all respondents who started the survey completed it fully. The median age for the study group was 33 years (range, 19–75), and 77 participants (93.9%) were female. In addition, 63 participants (76.8%) worked outside the ICU. Additional information regarding respondents is provided in the Supplementary Table S3 online. The focus group was composed of 5 nurses (age range, 28–74 years). All were female, and they worked in a variety of wards, including subacute, surgical, infection control, and oncology.

#### Catheter duration

The duration of catheterization was slightly lower in patients for whom the CATH TAG was used (hazard ratio [HR], 1.02; 95% confidence interval [CI], 0.91–1.14;  $P = .75$ ). The mean duration in the control and intervention phases was 5.51 days (95% CI,

**Table 3.** Nurses Responses to Online Survey Regarding Their Experience with the CATH TAG<sup>a</sup>

Question	All Included Wards/Units			ICU			Non ICU			P Value
	N	Mean	SE	N	Mean	SE	N	Mean	SE	
Overall, how satisfied or dissatisfied are you with the CATH TAG?	82	55.1	2.728	19	37.6	5.967	63	60.30	2.760	<.001
How likely is it that you would recommend the CATH TAG to be used in all Australian hospitals?	82	55.5	3.252	19	33.0	7.477	63	62.25	3.144	<.001
My general experience with the CATH TAG was . . .	82	55.2	2.405	19	40.42	6.159	63	59.70	2.264	.001
I believe my patients' general experience with the CATH TAG was	82	54.4	1.898	19	46.32	3.895	63	56.63	2.098	.021

Note. SE, standard error; ICU, intensive care unit.

<sup>a</sup>Respondents were asked to respond on a scale of 0–100.

**Table 4.** Experience with the CATH TAG: Summary of Findings From Focus-Group Participants

Theme	Summary	Sample of participant comments
Practical use	Most comments that were categorized as related to the practical use of the CATH TAG focused on barriers to use, applicability to different clinical settings and human-related factors.	' . . . it was a reminder to people to check.' 'To me it's easy just to see.' 'I believe they are a good idea, that if implemented they will or should decrease UTIs.' '[ . . . ] I think that they're a very very good idea of having CATH TAG.'
Patient care and patient perceptions	Although a subtheme suggested that patients did not notice the CATH TAG, participants also discussed times patient involvement with catheter care and indicated that there was no negativity from patients.	'Well the one lady that we had it [CATH TAG] with, she's very involved with all her care, and she thought it was a great idea.' 'Nobody [patients] was negative, no.'
Future use	Numerous comments were made about incorporating the CATH TAG into the catheter itself. Suggestions were largely based on the assumption that the CATH TAG, or some form of it, would be used in the future.	'But they certainly would be wonderful in nursing homes as well.' '[ . . . ] That's what we need—we need them for cannulas because we've got such a problem with cannulas.' 'Yeah, I can see the future; this is just the beginning of what this could do for other devices and systems.'

4.9–6.2) and 5.08 days (95% CI, 4.6–5.6), respectively (Figure 1). Similar results were obtained after adjusting for sex, age, and infectious diagnoses (HR, 0.98; 95% CI, 0.87–1.10;  $P = .74$ ). A nonsignificant reduction in catheter-associated asymptomatic bacteriuria was observed (odds ratio [OR], 0.90; 95% CI, 0.52–1.53;  $P = .69$ ). For patients who were not transferred or transferred to a ward in the same phase of the study, there was no effect (HR, 1.09; 95% CI, 0.97–1.24;  $P = .15$ ).

Excluding patients from the ICU, the duration of catheterization was significantly lower in patients for whom the CATH TAG was used (HR, 1.20; 95% CI, 1.06–1.37;  $P < .01$ ). The mean duration of catheterization decreased by 23% from 5.00 days (95% CI, 4.44–5.56) to 3.84 days (95% CI, 3.47–4.21).

### Perceptions of use

#### Online survey

There was a positive response to the CATH TAG, as demonstrated by participant answers to a range of questions (Table 2 and Supplementary Table S4 online). When comparing responses between ICU and non-ICU staff, non-ICU staff indicated a significantly higher level of agreement to several questions. For example, they indicated that the CATH TAG was helpful in daily routines ( $P = .003$ ) and as a reminder to check the ongoing need for catheterization ( $P < .001$ ). In the ICU, patients were less likely to ask about the CATH TAG ( $P < .001$ ) or to notify nurses of a change in the CATH TAG light ( $P = .002$ ). Non-ICU nurses were more

satisfied ( $P < .001$ ), were more likely to recommend the CATH TAG ( $P < .001$ ), and had a more positive experience than ICU nurses (Table 3).

#### Focus group

Three main themes emerged in the focus group: (1) issues related to the practical use of the CATH TAG during the project; (2) patient care and patient perceptions; and (3) future use of the CATH TAG (Table 4). Detailed results are provided in the supplementary material online.

### Discussion

We identified a reduction in urinary catheter duration after an intervention in which a novel electronic reminder system was attached to urinary catheter bags. A significant reduction in catheterization duration (23%) was identified outside the ICU. The use of the device was received positively by nursing staff and could be implemented easily into clinical practice. The study was enhanced by a mixed-methods approach, which helped us further understand the findings.

Interventions, such as a reminder system, to reduce the duration of catheterization have been shown to be effective in other studies.<sup>6–9</sup> However, our study is distinct due to the use of randomization in the study design.<sup>6–8</sup> In our subanalysis exploring non-ICU patients, we identified a significant reduction in catheterization duration. This result is consistent with a French study



that demonstrated an association between a reminder system and a reduction in catheter use in some, but not all, clinical wards within a hospital environment.<sup>9</sup> Similarly, a notable national prevention CAUTI program in the United States was also associated with a reduction in catheter use and CAUTI in non-ICUs.<sup>4</sup>

The mixed-methods approach we used provides further important contextual information that facilitates understanding of the results. There were notable differences between ICU and non-ICU staff regarding their experiences with the CATH TAG. Non-ICU staff appeared to have a positive experience and regarded it as more useful and effective than ICU staff. In the non-ICU setting, staff reported in both the survey and focus group that the CATH TAG was easy to use and to implement into clinical care.

We assessed our study for pragmatism, using the PRagmatic-Explanatory Continuum Indicator (PRECIS-2) tool.<sup>10</sup> This tool could be implemented into hospital care relatively easily, especially if it were incorporated into a urinary catheter bag. When we designed the study, we were interested to know whether the device would engage patients in catheter care, particularly when the device flashed red. There did not appear to be much patient involvement or ownership with the CATH TAG, perhaps because the device was largely unnoticed by participants. No negative comments were made by patients or reported to the researchers via the survey or focus group.

We did not identify a reduction in bacteriuria in our study. However, bacteriuria was a secondary outcome, and a larger sample size would be needed for a definitive conclusion. The need to preserve antibiotic effectiveness is an important healthcare issue.<sup>11</sup> Avoiding treatment of asymptomatic bacteriuria should reduce the risk of developing antibiotic resistance.<sup>12</sup> Thus, strategies that reduce catheter use, and therefore bacteriuria, may be of value and could be included as part of a wider strategy to reduce CAUTIs and antimicrobial resistance.

The cluster randomized design has the advantage of addressing many potential confounders because wards (clusters) act as their own control. A Hawthorne effect may have occurred as a result of study awareness and impending rollout. To reduce this potential bias, educational events and training on the use of the CATH TAG were staggered, were focused on the use of the device only and were delivered to wards individually in the week prior to implementation of the intervention. Our study was limited to a single hospital.

We undertook a pragmatic clinical trial and identified the potential benefits of using an electronic reminder system at the point of care to reduce catheterization duration and hence CAUTI risk. Although our overall results were negative, we identified a potential reduction in catheterization duration in the non-ICU setting. These results, coupled with largely positive survey and focus group feedback from nursing staff, suggest that the CATH TAG may be a useful device to aid prompt removal of urinary catheters in the non-ICU hospital setting.

**Supplementary material.** To view supplementary material for this article, please visit <https://doi.org/10.1017/ice.2019.31>.

**Author ORCIDs.** Brett G. Mitchell,  0000-0003-4220-8291

**Acknowledgements.** The authors acknowledge the support of the participating hospital and specifically the infection prevention and control team. Senver, the company that owns CATH TAG and who was awarded the Accelerating Commercialisation grant played no role in the study design, conduct, collection, or analysis of data.

**Financial support.** This study was supported by an Accelerating Commercialisation grant from the Australian Commonwealth Government.

**Conflicts of interest.** All authors report no conflicts of interest relevant to this article.

## References

1. Meddings J, Rogers MA, Macy M, Saint S. Systematic review and meta-analysis: reminder systems to reduce catheter-associated urinary tract infections and urinary catheter use in hospitalized patients. *Clin Infect Dis* 2010;51:550–560.
2. Meddings J, Rogers MA, Krein SL, Fakhri MG, Olmsted RN, Saint S. Reducing unnecessary urinary catheter use and other strategies to prevent catheter-associated urinary tract infection: an integrative review. *BMJ Qual Saf* 2014;23:277–289.
3. Fasugba O, Cheng AC, Russo PL, Northcote M, Rosebrock H, Mitchell BG. Reducing urinary catheter use: a protocol for a mixed methods evaluation of an electronic reminder system in hospitalised patients in Australia. *BMJ Open* 2018;8:e020469.
4. Saint S, Greene MT, Krein SL, *et al.* A program to prevent catheter-associated urinary tract infection in acute care. *N Engl J Med* 2016;374:2111–2119.
5. Robson C, McCartan K. *Real World Research*, 4th ed. Chichester, UK: John Wiley & Sons; 2016.
6. Apisarnthanarak A, Thongphubeth K, Sirinvaravong S, *et al.* Effectiveness of multifaceted hospitalwide quality improvement programs featuring an intervention to remove unnecessary urinary catheters at a tertiary care center in Thailand. *Infect Control Hosp Epidemiol* 2007;28:791–798.
7. Saint S, Kaufman SR, Thompson M, Rogers MA, Chenoweth CE. A reminder reduces urinary catheterization in hospitalized patients. *Jt Comm J Qual Saf* 2005;31:455–462.
8. Huang W-C, Wann S-R, Lin S-L, *et al.* Catheter-associated urinary tract infections in intensive care units can be reduced by prompting physicians to remove unnecessary catheters. *Infect Control Hosp Epidemiol* 2004;25:974–978.
9. Crouzet J, Bertrand X, Venier A, Badoz M, Husson C, Talon D. Control of the duration of urinary catheterization: impact on catheter-associated urinary tract infection. *J Hosp Infect* 2007;67:253–257.
10. Loudon K, Treweek S, Sullivan F, Donnan P, Thorpe KE, Zwarenstein M. The PRECIS-2 tool: designing trials that are fit for purpose. *BMJ* 2015;350:h2147.
11. Trautner BW, Grigoryan L, Petersen NJ, *et al.* Effectiveness of an antimicrobial stewardship approach for urinary catheter-associated asymptomatic bacteriuria. *JAMA Intern Med* 2015;175:1120–1127.
12. Gross PA, Patel B. Reducing antibiotic overuse: a call for a national performance measure for not treating asymptomatic bacteriuria. *Clin Infect Dis* 2007;45:1335–1337.